



Risk Assessment

Activity:		Delivery / Collection											Reference No.:				
Location:													Revision:				
													Assessed By:				
													Approved By:				
													Issue Date:				
Hazard	Consequences	Severity S = Safety C = Commercial R = Reputation			Likelihood	Total Risk	Code	Control Measures	Severity S = Safety C = Commercial R = Reputation			Likelihood	Total Risk	Code	Risk Owner	Residual Risk / Consequence with Controls in Place	Further Action and Responsibility
		S	C	R					S	C	R						
		S	C	R					S	C	R						
Load moving whilst Loading/Unloading	Load injuring people or damaging equipment & property.	3	3	2	3	9	Y	Tag line to be controlled by CITB qualified slinger /signaller Erectors to move to position of Safety as directed by Site Supervisor.	3	1	1	2	6	G	Plant Services	Not using controls	Spot Checks by Supervisor during operation.
Working with crane to load units. Contractor's Staff entering slew area of crane.	Serious Injury & Death if Jib of crane comes into contact with vehicles or plant. Contractors Staff being injured.	4	4	4	3	12	R	Appointed person to ensure crane works to Permit To Lift Plan. Permit to lift to be issued by Appointed Person.	2	1	1	2	4	G	Plant Services	Not using controls	Site supervisor to carry out Spot checks during operation.



Risk Assessment

Activity:		Delivery / Collection											Reference No.:				
Location:													Revision:				
													Assessed By:				
													Approved By:				
													Issue Date:				
Hazard	Consequences	Severity S = Safety C = Commercial R = Reputation			Likelihood	Total Risk	Code	Control Measures	Severity S = Safety C = Commercial R = Reputation			Likelihood	Total Risk	Code	Risk Owner	Residual Risk / Consequence with Controls in Place	Further Action and Responsibility
		S	C	R					S	C	R						
Working at Height	Falls causing serious injury or death.	4	2	2	3	12	0	All ladders to be footed. Safety harnesses with inertia reel must be worn when working at height. Inertia Reel to be connected to Crane Block.	4	1	1	1	4	O	Plant Services	Not using controls	Site supervisor to carry out Spot checks during operation.
Strain Injury	Muscle injuries & Strains	2	1	1	3	6	Y	Manual handling to be carried out in correct fashion (Please see attached safety leaflet)	2	1	1	2	4	G	Plant Services	Not using controls	Site supervisor to carry out Spot checks during operation.
Insecure Load	Load slipping	2	2	1	2	4	G	Qualified CITB slinger / signaller to unload and erect only	2	1	1	1	2	G	Plant Services	Not using controls	Site supervisor to carry out Spot checks during operation.
Electrocution Crane coming into contact with overhead cables.	Serious Injury or Death	4	4	4	3	12	0	Crane fitted with slew Restrictors (in Operation)	3	3	2	2	6	Y	Operator + Plant Services.	Not Using controls	Site supervisor to carry out Spot checks during operation.



Risk Assessment

Activity:		Delivery / Collection											Reference No.:				
Location:													Revision:				
													Assessed By:				
													Approved By:				
													Issue Date:				
Hazard	Consequences	Severity S = Safety C = Commercial R = Reputation			Likelihood	Total Risk	Code	Control Measures	Severity S = Safety C = Commercial R = Reputation			Likelihood	Total Risk	Code	Risk Owner	Residual Risk / Consequence with Controls in Place	Further Action and Responsibility
		S	C	R					S	C	R						
Vehicle movements	Vehicles reversing. Crush injuries	4	2	2	2	8	O	CITB Banksman to ensure vehicles remain on designated route. Banksman to direct all vehicle movements	4	1	1	1	6	G	Plant Services	Not using controls	Site supervisor to carry out Spot checks during operation.
Manual Handling	Pushing/pulling units. Crush injury to feet and hands. Straining/injury to back	2	1	1	3	6	Y	Qualified Appointed person to supervise operations. Safety zone to remain in place at all times.	2	1	1	2	4	G	Plant Services	Not using controls	Site supervisor to carry out Spot checks during operation.

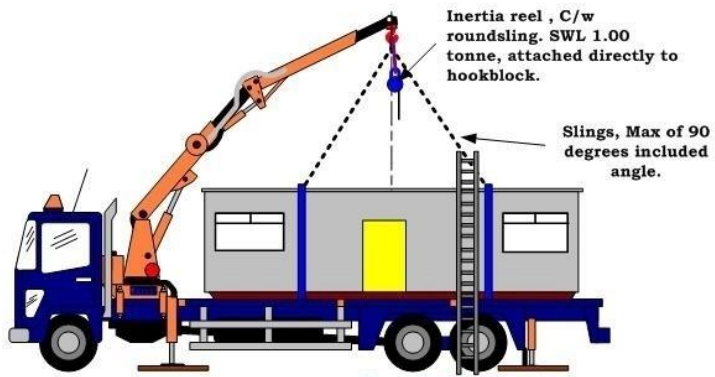
Severity	5	5 (O)	10 (R)	15 (R)	20 (R)	25 (R)
	4	4 (O)	8 (O)	12 (O)	16 (R)	20 (R)
	3	3 (Y)	6 (Y)	9 (Y)	12 (Y)	15 (Y)
	2	2 (G)	4 (G)	6 (Y)	8 (Y)	10 (Y)
	1	1 (G)	2 (G)	3 (G)	4 (Y)	5 (Y)
		1	2	3	4	5
		Likelihood				

G – Green
Y – Yellow
O – Orange
R – Red

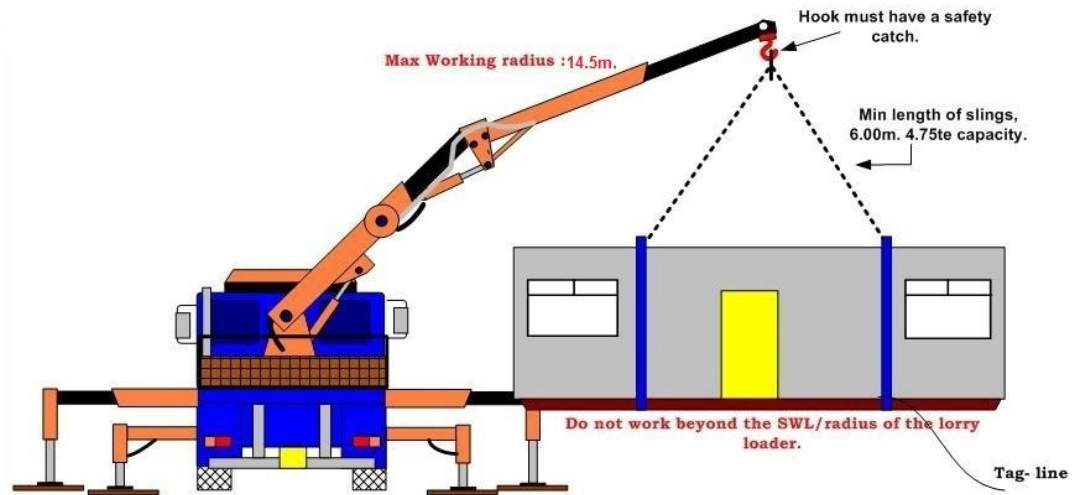
LIKELIHOOD	Scale	Description	Guidance
	5	Almost Certain	A risk with a greater than 9 in 10 chance of occurring and therefore has a high probability of occurring during the period under consideration
	4	Probable	A risk with a greater than even chance of occurring during the period of concern
	3	Possible	A risk with a more than 1 in 10 chance of happening during the period of concern
	2	Remote	A risk with a more than 1 in 100 of happening during the period of concern
	1	Improbable	A risk that is so unlikely it can be assumed that it will not occur

SEVERITY:

Scale	Reputation Delivery of Product / Service	Health, Safety & Environment	Commercial
5 Threat to business survival and Group credibility	Association with high profile, sensitive issues / project, or product / service provided is considered to have a critical impact on client / business / stakeholder interests and / or share price activity. Is not within the normal business experience or territory.	Multiple fatalities. Major environmental incident involving threat to public health or safety. Negligence and / or criminal liability. Directors in court.	Cost > £10M
4 Threat to: 1) Future trading 2) Core client / business objectives	Core client / business / stakeholder interests will not be protected by this major impact on quality, programme or uncertainty in the product / service provided. Involvement results in significant protester action or media campaign. Major impact on goodwill and stake holder relationships in jeopardy.	Fatality: criminal liability resulting in prosecution. Environmental incident leading to breach, protester action or serious adverse publicity. Legal and compensation costs.	Cost £1M - £10M
3 Partial delivery only of client / business requirements	Impact on quality, programme or uncertainty in the product / service will result in partial delivery only of client / business requirements. Actions result in media criticism. Client dissatisfaction and damaged stakeholder relationships.	Major injury to worker or third party. Sensitive combination of operation and location likely to trigger damage and / or complaint of nuisance. Prosecution and / or compensation.	Cost £100K - £1M
2 Late or inconsistent delivery of client / business requirements	The product / service will result in delayed or inconsistent delivery of client / business requirements. Actions result in local press criticism. Client and stakeholder relationships strained.	Minor injury to worker or third party. Environmental impact requiring management response to recover.	Cost £10K - £100K
1 Negligible impact	Negligible impact	Negligible impact	Cost < £10K



A second man must foot the ladder. The ladders must be in good order and free from any defects. The ladders must be long enough to reach the top of the cabin whilst on the truck. Do not access the cabin roof, rather, use ladder to access all 4 corners of the cabin to install the chain slings. Employ a full body harness and inertia and securely attached to the crane hook using a 1.00t sling. In this case the ladder must be long enough to permit at least 5 rungs clear of the roof.



All Outriggers must be fully extended and locked on flat, level ground.
Wheels must not be lifted clear of the ground. Beware of underground and overhead proximity hazards prior to lifting.

Lorry loader details:

PM 65026SP, mounted on truck.
Radio controlled.
All Outriggers fully extended to 6.60m, including fully extended aux outriggers. (4 in total).
Max. Radius: 14.5m.
SWL @ 4m: 13 tonnes
Max weight of cabin incl slings:4.00te.
% of capacity: 81%.
Outrigger reaction loading: 12.56te